



Funded by the European Union



H2020-MSCA-RISE-2016  
CURE-XF - 734353

# Université catholique de Louvain Earth&Life Institute Plant Pathology Lab

Presentation of Partners  
P° UCL

**CURE-XF Kick-off Meeting**  
*CIHEAM Bari 28-29 September, 2017*





Funded by the European Union

**UCL**  
Université  
catholique  
de Louvain



**1** Nobel Prize in 1974:  
**Christian de Duve** (1917-2013)

**21** Francqui Prizes

**4<sup>th</sup>** comprehensive french-speaking university in  
the world and **1<sup>st</sup>** french-speaking university in  
Belgium (THE, QS rankings)

# RESEARCH



H2020-MSCA-RISE-2016  
CURE-XF - 734353

## IN A FEW FIGURES

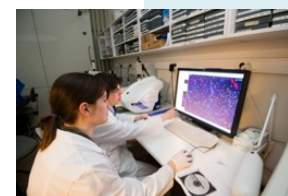
**2 987** researchers (academic and scientific)

**2 034** PhD students

**21** research institutes

**74** research centers

**33** technology platforms





Funded by the European Union

# VALORISATION OF RESEARCH



H2020-MSCA-RISE-2016  
CURE-XF - 734353

**UCL**  
Université  
catholique  
de Louvain

## 2 SCIENCE PARKS, 4 INCUBATORS

Louvain-la-Neuve : **231** hectares

Brussels : **68** hectares

Seneffe : **4** hectares

hosting

**343** companies

**6 146** jobs





Funded by the European Union

# Earth and Life Institute

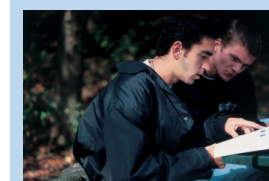


**More than 450 members**

- 47 faculty members
- 250 researchers
- about 1 thesis every 2 weeks!



H2020-MSCA-RISE-2016  
CURE-XF - 734353







Funded by the European Union

## 5 Research Clusters supported by interconnected administrative and CLC staff



H2020-MSCA-RISE-2016  
CURE-XF - 734353





Funded by the European Union

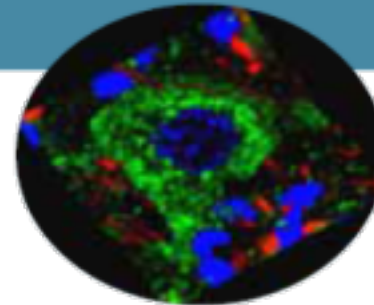
## ANALYTICAL SUPPORT



*ANACHIM analyses chemical molecules in complex matrices (GC and HPLC)*



*ACME identifies chemical components (e.g. minerals) from natural material (soil, water, vegetation, rock, etc.) by optical spectrometry (IPC), HPLC and X-ray diffraction.*



*IMABIOL provides high-resolution microscopes (confocal and atomic force)*



H2020-MSCA-RISE-2016  
CURE-XF - 734353

## TECHNOLOGICAL PLATFORMS/SUPPORT

### 6 PLATFORMS



*The CISM offers the infrastructure for intensive calculations and mass storage.*



*Methodological and statistical support is provided by the SMCS*



*Greenhouses and plant laboratories (phytothrone) enable plant growth under controlled conditions*





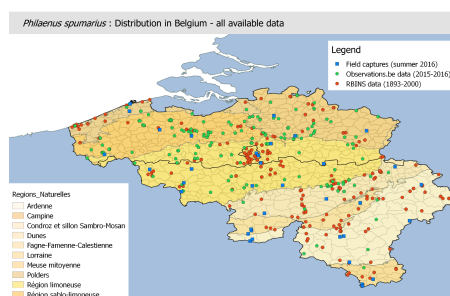
Funded by the European Union



H2020-MSCA-RISE-2016  
CURE-XF - 734353

## Ongoing project and activities

- Cost action EUROXANTH
- XYLERIS project - (ILVO, ULB and UCL)
- CB/JCG members of EFSA plant health panel



## Ongoing research activities

- Potential insect vectors
- Detection strategies – spy insects
- Potential host plants in Belgium
- **Xanthomonads research – movement in xylem, T3SS, T3 effectors – translucens, manihotis, cassavae**



**CURE-XF Kick-off Meeting**  
**CIHEAM Bari 28-29 September, 2017**



Funded by the European Union

*Comparative Genomics Identifies a Novel Conserved Protein, HpaT, in Proteobacterial Type III Secretion Systems that Do Not Possess the Putative Translocon Protein HrpF. In: Frontiers in Microbiology, Vol. 8, p. 1-16 (2017).*

*Four statements questioning the EU control strategy against Xylella fastidiosa. In: EFSA Journal, Vol. 14, no.3, p. 1-24 (2016). doi:10.2903/j.efsa.2016.4450.*

*Statement on diversity of Xylella fastidiosa subsp. pauca in Apulia. In: EFSA Journal, Vol. 14, no.8, p. 1-19 (2016)*

*Assessing the risk posed to plant health by Xylella fastidiosa in the European Union. In: watch letter, Vol. 33, no.33, p. 1-8 (2015).*



## Publications



H2020-MSCA-RISE-2016  
CURE-XF - 734353

*Transcriptome and proteome analysis reveal new insights into proximal and distal responses of wheat to foliar infection by Xanthomonas translucens. Nature Scientific reports, 7: 10157. (2017)*

*Scientific Opinion on the risk to plant health posed by Xylella fastidiosa in the EU territory, with the identification and evaluation of risk reduction options. In: EFSA Journal, Vol. 13, no.1, p. 3989 (2015).*

*Measuring the general phytosanitary situation: development of a plant health barometer. In: European Journal of Plant Pathology, Vol. 140, no.3 (2014).*